

VULKAN

CRISTALLO DI ROCCA
PIETRA DI LUNA
OSSIDIANA



MAMAN THEUNIS S.A.

Chée de Hannut, 7 – 1357 HÉLÉCINE
Tél : (019) 65.51.38. - Fax : (019) 65.61.66
E-mail : info@mamantheunis.be
TVA : BE 413.481.306 RCN : 36.428

Rue du Grand Moulin, 82 – 4671 SAIVE
Tel : (04) 362.39.46 – Fax : (04) 362.75.54



www.mamantheunis.be

isla® ■ ■ ■
FASCINO ITALIANO



VULKAN

cristallo di rocca

60x60 - 23^{5/8}"x23^{5/8}" Rettificato



8,5
▼ mm
▲ 3/8"



1004588 100x100 - 40"x40" Rett

1 079

19
▼ mm
▲ 3/16"



1004606 80x80 - 32"x32" Rett R11

1 94



1004585 80x80 - 32"x32" Rett

2 076



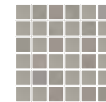
1004552 60x120 - 23^{5/8}"x48" Rett

2 078



1004528 60x60 - 23^{5/8}"x23^{5/8}" Rett

3 058



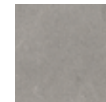
1004564 30x30 - 11^{3/4}"x11^{3/4}"
Mosaico Tessera 5x5 - 2"x2"

5 130



1004582 30x60 - 11^{3/4}"x23^{5/8}" Rett

6 052



1004618 30x30 - 11^{3/4}"x11^{3/4}" Rett

12 052

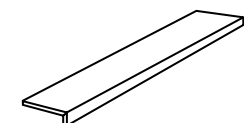


BATTISCOPIA
1004567 6,5x60 - 2^{9/16}"x 23^{5/8}" Rett

12 017

BATTISCOPIA
1004570 7,5x80 - 3"x32" Rett

6 018



COSTA RETTA
1004591 30x120x3,3 - 11^{3/4}"x48"x1^{5/16}" Rett

2 94

VULKAN

pietra di luna

60x60 - 23⁵/₈"x23⁵/₈" Rettificato





8,5
▼ mm
▲ 3/8"



1004590 100x100 - 40"x40" Rett

1 079

19
▼ mm
▲ 13/16"



1004608 80x80 - 32"x32" Rett **R11**

1 94



1004587 80x80 - 32"x32" Rett

2 076



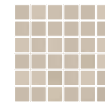
1004554 60x120 - 23⁵/₈"x48" Rett

2 078



1004530 60x60 - 23⁵/₈"x23⁵/₈" Rett

3 058



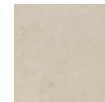
1004566 30x30 - 11³/₄"x11³/₄"
Mosaico Tessera 5x5 - 2"x2"

5 130



1004584 30x60 - 11³/₄"x23⁵/₈" Rett

6 052



1004620 30x30 - 11³/₄"x11³/₄" Rett

12 052

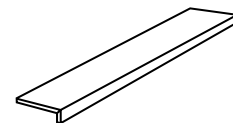


BATTISCOPIA
1004569 6,5x60 - 2⁹/₁₆"x23⁵/₈" Rett

12 017

BATTISCOPIA
1004572 7,5x80 - 3"x32" Rett

6 018



COSTA RETTA
1004593 30x120x3,3 - 11³/₄"x48"x1⁵/₁₆" Rett

2 94

VULKAN

ossidiana

60x60 - 23⁵/₈"x23⁵/₈" Rettificato

30x60 - 11³/₄"x23⁵/₈" Rettificato

30x30 - 11³/₄"x11³/₄" Rettificato





8,5
▼ mm
▲ 3/8"



1004589 100x100 - 40"x40" Rett

1 079

19
▼ mm
▲ 3/8"



1004607 80x80 - 32"x32" Rett R11

1 94



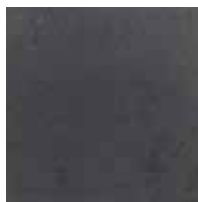
1004586 80x80 - 32"x32" Rett

2 076



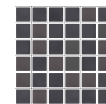
1004553 60x120 - 23^{5/8}"x48" Rett

2 078



1004529 60x60 - 23^{5/8}"x23^{5/8}" Rett

3 058



1004565 30x30 - 11^{3/4}"x11^{3/4}"
Mosaico Tessera 5x5 - 2"x2"

5 130



1004583 30x60 - 11^{3/4}"x23^{5/8}" Rett

6 052



1004619 30x30 - 11^{3/4}"x11^{3/4}" Rett

12 052

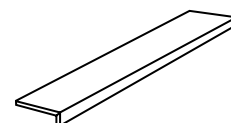


BATTISCOPIA
1004568 6,5x60 - 2^{9/16}"x23^{5/8}" Rett

12 017

BATTISCOPIA
1004571 7,5x80 - 3"x32" Rett

6 018



COSTA RETTA
1004592 30x120x3,3 - 11^{3/4}"x48"x1^{5/16}" Rett

2 94

GRES PORCELLANATO A TUTTA MASSA

FULL BODY PORCELAIN STONWARE

GRÈS CÉRAME PLAINE MASSE

VOLLMASSEFEINSTEINZEUG

КЕРАМОГРАНИТ ПРОКРАШЕННЫЙ ПО ВСЕЙ ТОЛЩИНЕ



80x80 19mm


100x100

80x80 R11

8

Proprietà fisico chimiche/Physical-chemical properties Caractéristiques physiques-chimiques/physische Chemische eigenschaften	Norme/Norms Noemes Normen	Valori presvalori prescritti / Required values Valeurs exigees / Vorgeschriebene werte		
Dimensioni Sizes Format Format	ISO 10545-2	Lunghezza e larghezza Length and width Longueur et largeur Länge und Breite	(± 0,75% 190 cm ² < 410 ≤) (± 0,6 % > 410 cm ²)	± 0,3% ± 1 mm
		Rettilineità spigoli Linearity Rectitude de l'angularité Kantengeradheit	(± 0,5% max)	± 0,3% ± 1 mm
		Ortogonalità Wedging Orthogonalité Rechtwinkligkeit	(± 0,6% max)	± 0,3% ± 1,2 mm
	ASTM C485	Planarità Warpage Planéité Ebenflächigkeit	(± 5% max)	± 0,5% max Warpage diagonal/edge ± 0,4%
Spessore Thickness Épaisseur Stärke	ISO 10545-2	(± 5% max)	10 mm 19 mm	
Assorbimento d'acqua Water absorption Absorption d' eau Wasseraufnahme	ISO 10545-3		≤ 0,5% GRUPPO Bla GL	E ≤ 0,1% Bla - UGL
Resistenza a flessione e forza di rottura Modulus of rupture and breaking strength résistance à la flexion et force de rupture Biegefestigkeit und Bruchlast	ISO 10545-4		S ≥ 1300 N	S ≥ 1300 N S ≥ 5000 N
			R ≥ 35 N/mm ²	R ≥ 35 N/mm ² R ≥ 50 N/mm ²
Resistenza agli sbalzi termici Thermal shocks resistant Résistance aux variations thermiques Temperaturwechselbeständigkeit	ISO 10545-9		Requisito non previsto Not provided requirement Qualité pas prévue Erfordernis nicht vorgesehen	Resistente Resistant Résistant Widerstandsfähigkeit
Resistenza al gelo Frost resistance Résistance au gel Froständigkeit	ISO 10545-12		Nessuna alterazione No alteration Aucune altération Keine Änderung	Resistente Resistant Résistant Widerstandsfähigkeit
Resistenza all'abrasione profonda Abrasion resistance R.sistance . l'abrasion Verschlei. (Volumenverlust)	ISO 10545-6		≤ 175 mm ²	≤ 175 mm ²
Coefficiente di dilatazione termica lineare (50°/400°) Linear thermal expansion coefficient (50°/400°) Dilatation thermique linéaire (50°/400°) Lineare Wärmeausdehnung (50°/400°)	ISO 10545-8			Metodo disponibile Test method available Méthode disponible Verfügbares Verfahren
Durezza della Superficie Surface resistance Dureté de la surface Ritzhärte deo Oberfläche	EN 101			> 6
Resistenza all'attacco chimico (tranne acido fluoridrico) Resistance to chemical attack (except hydrofluoric acid) Résistance à l'attaque chimique (sauf acide fluoridrique) Säure-und Laugenbeständigkeit (außer Flußsäure)	ISO 10545-13		Come indicato dal produttore As indicated by manufacturer Comme indiqué par le producteur Wie vom Hersteller angegeben	Classe A - LA - HA Class A - LA - HA Classe A - LA - HA Gruppe A - LA - HA
Resistenza alle macchie Resistance to staining Résistance aux taches Fleckbeständigkeit	ISO 10545-14		CLASSE min. 3	Classe 5 Class 5 Classe 5 Gruppe 5
Coefficiente di attrito Coefficient of friction Coefficient de frottement Reibungskoeffizient	DIN 51130			R10 R11
Resistenza alla scivolosità. Coefficiente di attrito medio Skid resistance. Average coefficient of friction Résistance au glissement. Coefficient de frottement moyen Rutschfestigkeit. Mittlerer Reibungswert	DIN 51097			Classe B Classe C Class B Class C Classe B Classe C Gruppe B Gruppe C
	B.C.R.A. (No Lapp)		μ > 0,40 (Wet) μ > 0,40 (Dry)	0,40 ≤ f ^μ ≤ 0,74
	DCOF Acu Test (No Lapp)		≥ 0,42	f ^μ ≥ 0,42
Variazione cromatica Colour shading Variations chromatiques Chromatische Abweichungen				V 2

IMBALLI - PACKING TABLE - TABLEAU DES EMBALLAGES - VERPACKUNGS TABELLE - УПАКОВКА

FORMATO SIZE	SCATOLA - BOX			PALLET		
	Pezzi - Pieces	m ²	KG	Scatole - Boxes	m ²	KG
100x100 - 40"x40" Rett	1	1,00	20,00	42	42,00	860
60x120 - 23 ^{5/8} "x48" Rett	2	1,44	31,00	21	30,24	671
80x80 - 32"x32" Rett	2	1,28	28,20	40	51,20	1.148
80x80 - 32"x32" Rett 19mm 	1	0,64	29,00	40	25,60	1.180
60x60 - 23 ^{5/8} "x23 ^{5/8} " Rett	3	1,08	24,00	32	34,56	788
30x60 - 11 ^{3/4} "x23 ^{5/8} " Rett	6	1,08	24,00	40	43,20	980
30x30 - 11 ^{3/4} "x11 ^{3/4} " Rett	12	1,08	24,00	40	43,20	980
30x30 - 11 ^{3/4} "x11 ^{3/4} " Mosaico 5x5 - 2"x 2"	5	0,45	9,00	60	27,00	560

CE

 NGT SPA
 VIA PLATONE 9
 42048 RUBIERA (RE)

 05
 001NGT2013-07-01

EN 14411:2012

 Piastrelle di ceramica pressate a secco,
 con assorbimento di acqua E_p ≤ 0,5%,
 per pavimentazioni interne ed esterne.

 Dry pressed ceramic tile,
 with water absorption E_p ≤ 0,5%,
 for internal and external floorings.

 Prima edizione: Settembre 2017
 Coordinamento: Ufficio Marketing
 Foto: Foto Mussatti - Hipix
 Stampa: Intese grafiche

© Copyright 2017 Gruppo Romani S.p.A.



MAMAN THEUNIS S.A.

Chée de Hannut, 7 – 1357 HÉLÉCINE
Tél : (019) 65.51.38. - Fax : (019) 65.61.66
E-mail : info@mamantheunis.be
TVA : BE 413.481.306 RCN : 36.428

Rue du Grand Moulin, 82 – 4671 SAIVE
Tel : (04) 362.39.46 – Fax : (04) 362.75.54



www.mamantheunis.be



isla® ■ ■ ■
FASCINO ITALIANO

SEDE COMMERCIALE E LOGISTICA
VIA PLATONE, 9 - 42048 RUBIERA (RE) - ITALY
TEL. +39 0522-622690 - FAX +39 0522 1602001
WWW.ISLATILES.IT - INFO@ISLATILES.IT

NGT SPA - SEDE LEGALE E AMMINISTRATIVA:
VIA A. VOLTA 9 - 42013 CASALGRANDE RE - ITALY
TEL +39 0522 998411 - FAX +39 0522 999515